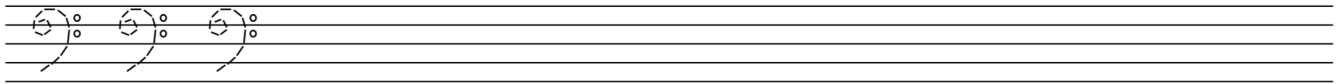
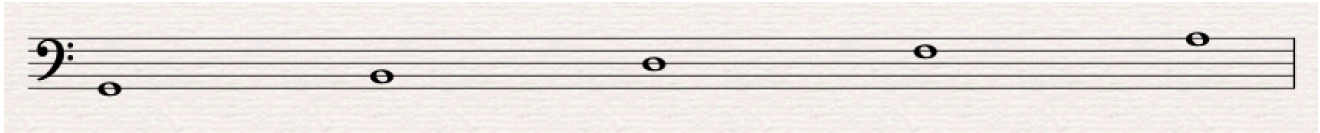


# The Bass Clef

1. Practice drawing the bass clef sign by tracing over the guidelines. Draw five more in the remaining space.



Notes on the lines:



Great

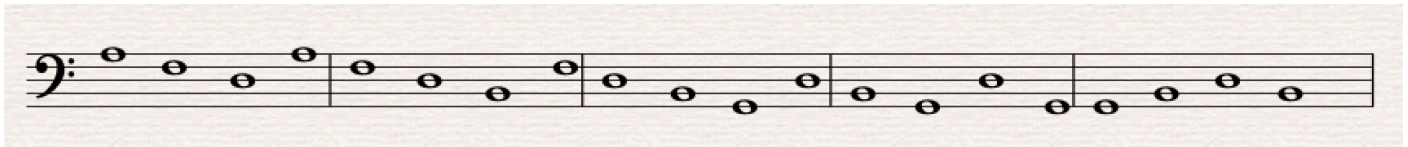
Big

Dogs

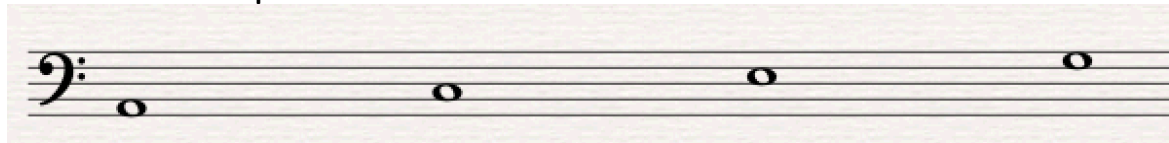
From

Africa

Write the note names under these notes:



Notes in the spaces:



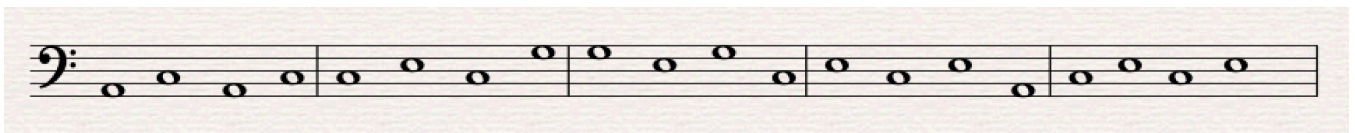
All

Cows

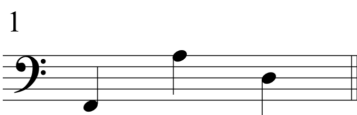
Eat

Grass

Write the note names under these notes:



What words do these notes spell? Write the letters under the notes!



— — —



— — —



— — —



— — —



— — —



— — —



— — — —



— — — —



— — —